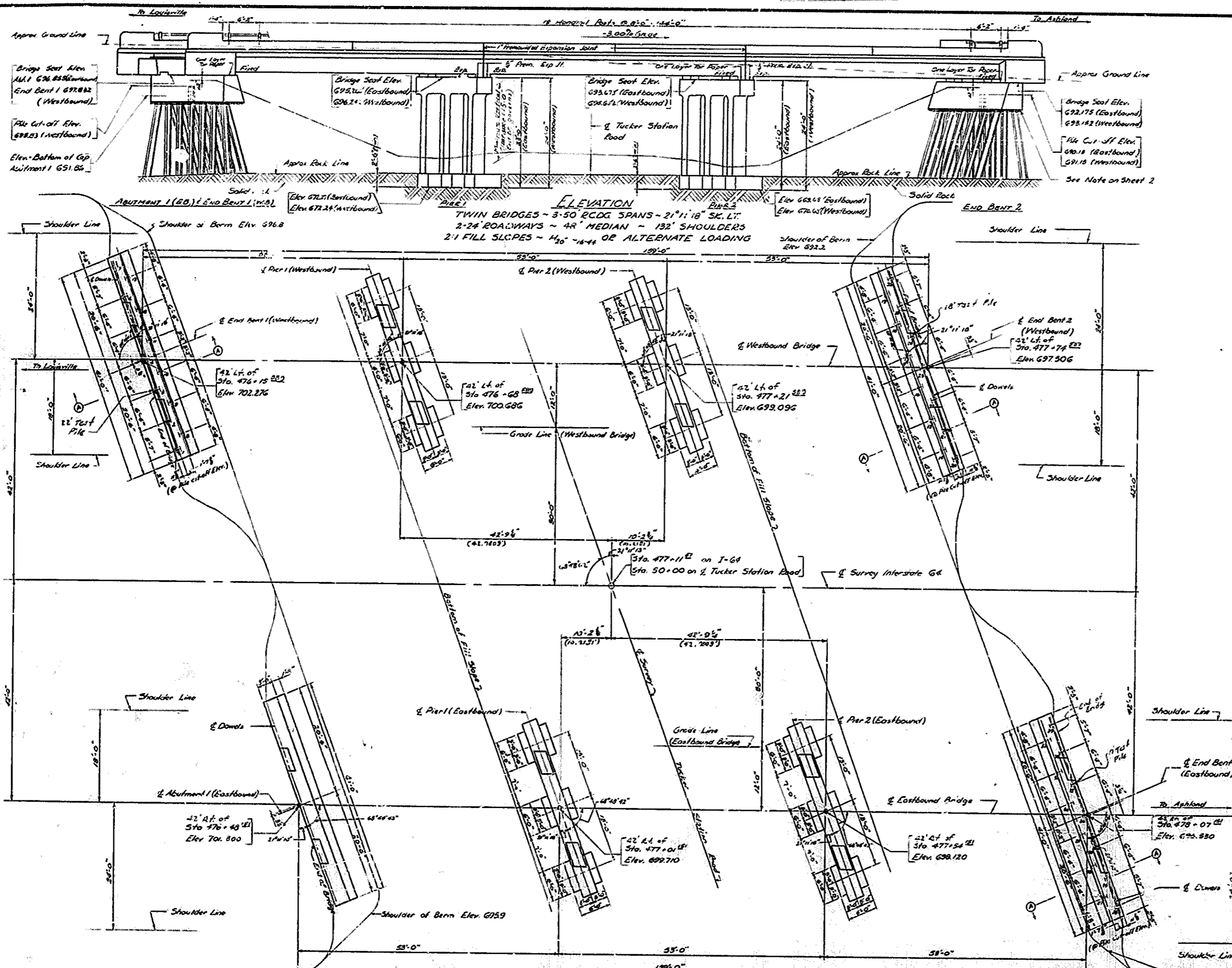


GENERAL NOTE

SPECIFICATIONS Kentucky Department of Highways, 1936 Standard with Amendments
DESIGN LOAD Bridge designed for 75' Spans or Alternate Loading of two lanes four feet apart with each carrying 24000 pounds, which ever gives the greatest stress.
DESIGN STRESSES: $f_c = 20000 \text{ psi}$; $f_s = 30000 \text{ psi}$; $f_t = 12000 \text{ psi}$; and $f_w = 700 \text{ psi}$.
CONCRETE Class 2 Concrete to be used throughout.
REINFORCEMENT: Intermediate or Hard Grade reinforcement shall be used in accordance with A.S.T.M. A15-58T for billet steel or A16-58T for rail steel. Dimensions from face of concrete to bars are clear distances, except as otherwise shown. Dimensions for spacing or distances center to center of bars.
BEVELED EDGES: All exposed edges shall be beveled $\frac{1}{4}$ " unless otherwise noted.
TAR PAPER: To be commercial grade for paper or roofing felt approximately $\frac{1}{8}$ " thick.
COPPER STRIP, EXPANSION JOINT MATERIAL, AND TAR PAPER: The cost of these items to be included in the unit price bid for Class A Concrete.
PILING: Piles to be driven to said rock strata. Test piles to determine length of piling required shall be driven at locations shown on plans. Test piles shall be accurately located so as to be used as bearing piles in the finished structure.
CONSTRUCTION NOTE: Pour Pier Footings against rock without the use of forms. Any additional concrete placed outside the neat lines will be at the contractor's expense.



TOTAL ESTIMATE OF QUANTITIES									
ITEM	SHEET NO.	CONCRETE		STRUCTURE EXC.		GRAVEL		SUMMARY	
		CU YDS.	CU YDS.	CU YDS.	CU YDS.	CU YDS.	CU YDS.	CU YDS.	CU YDS.
EASTBOUND BRIDGE									
Layout	1								
Abutment 1	2	29.3	1218	150	30				
Pier 1	4	42.2	7197	20	40				
Pier 2	4	41.2	7093	50	40				
End Bent 2	2	29.3	2556	150	40				
50 R.C.D.G. - Span 1	5 E.C.	141.2	32789			456	217	217	
50 R.C.D.G. - Span 2	5 E.C.	128.5	31926			456			
50 R.C.D.G. - Span 3	5 E.C.	141.2	32789			456			
Handrails - Spans 1, 2, 3	14 H112								316.67
Pile Record Table	2								
Elevations	7								
Soundings	9								
12 RPS3 Piles	P-17								
Copper Strip (Exp. Jt. Material)	110-BS1								
Bronze Plates	5 E.C.								
TOTALS - EASTBOUND BRIDGE		550.5	116673	330	110	1368	217	217	316.67
WESTBOUND BRIDGE									
Layout	1								
End Bent 1	2	29.3	2576	150	40				
Pier 1	4	42.2	7197	20	40				
Pier 2	4	41.2	7093	50	40				
End Bent 2	2	29.3	2576	100	40				
50 R.C.D.G. - Span 1	5 E.C.	141.2	32789			456	231	231	
50 R.C.D.G. - Span 2	5 E.C.	128.5	31926			456			
50 R.C.D.G. - Span 3	5 E.C.	141.2	32789			456			
Handrails - Spans 1-3	14 H112								316.67
Pile Record Table	2								
Elevations	7								
Soundings	9								
Copper Strip (Exp. Jt. Material)	110-BS1								
Bronze Plates	5 E.C.								
12 RPS3 Piles	P-17								
TOTALS - WESTBOUND BRIDGE		551.9	118202	320	80	1368	523	523	316.67
TOTAL		1102.4	234875	650	190	2736	740	740	633.34

BILL OF INCIDENTAL MATERIAL		
ITEM	NO.	DESCRIPTION
Copper Strips	4	See Sketch 4104, Draw. G-351
Expansion Joint Material	4	1" x 1/2" x 25' (Between Spans)
"	8	1" x 1/2" x 15' (Between Span & Pier)
"	2	5" x 2 1/2" x 25' (Over Pier 1)
"	2	5" x 1 1/2" x 25' (Over Pier 2)

NOTE: Quantities shown in Bill of Incidental Materials are approximate only, and the contractor is responsible for furnishing enough material to complete the work in accordance with the specifications.

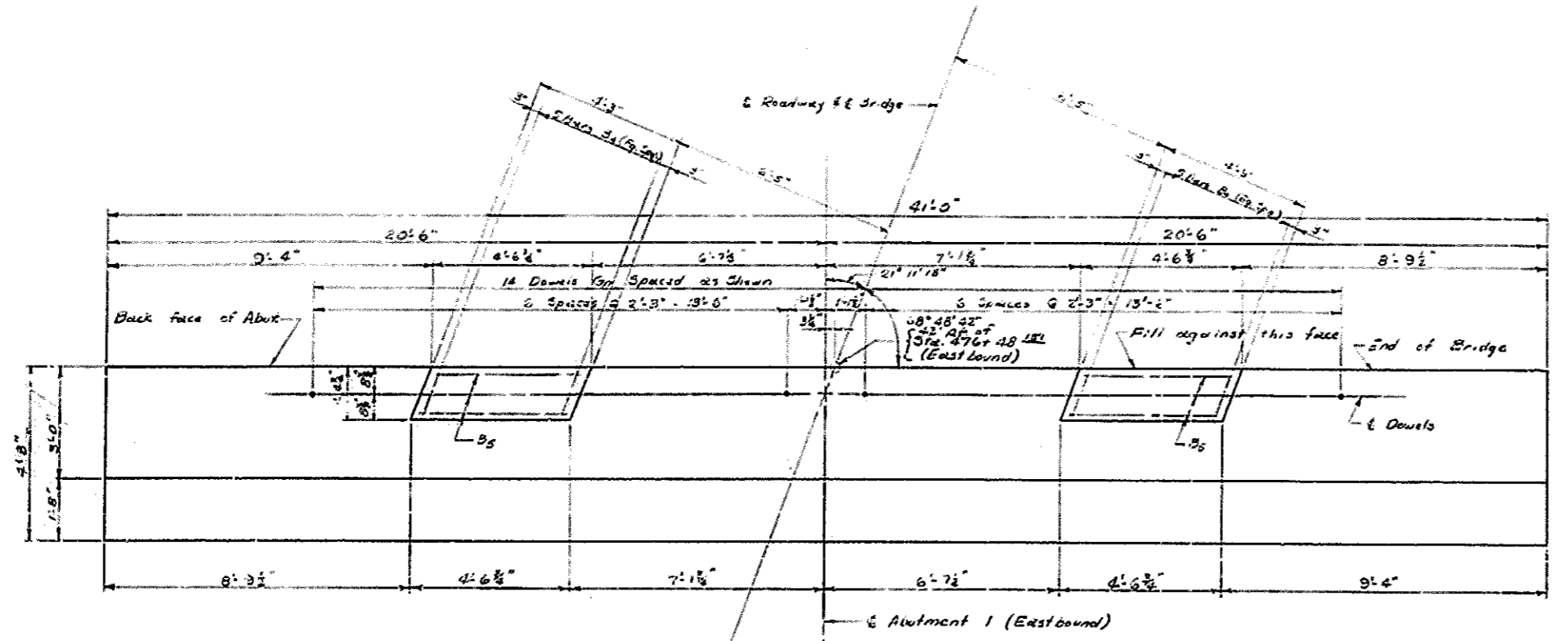
I-64 OVER TUCKER STATION ROAD SHEET 1059

COMMONWEALTH OF KENTUCKY
 DEPARTMENT OF HIGHWAYS
 FRANKFORT
 COUNTY OF
JEFFERSON
 LOUISVILLE - ASHLAND
 ROAD

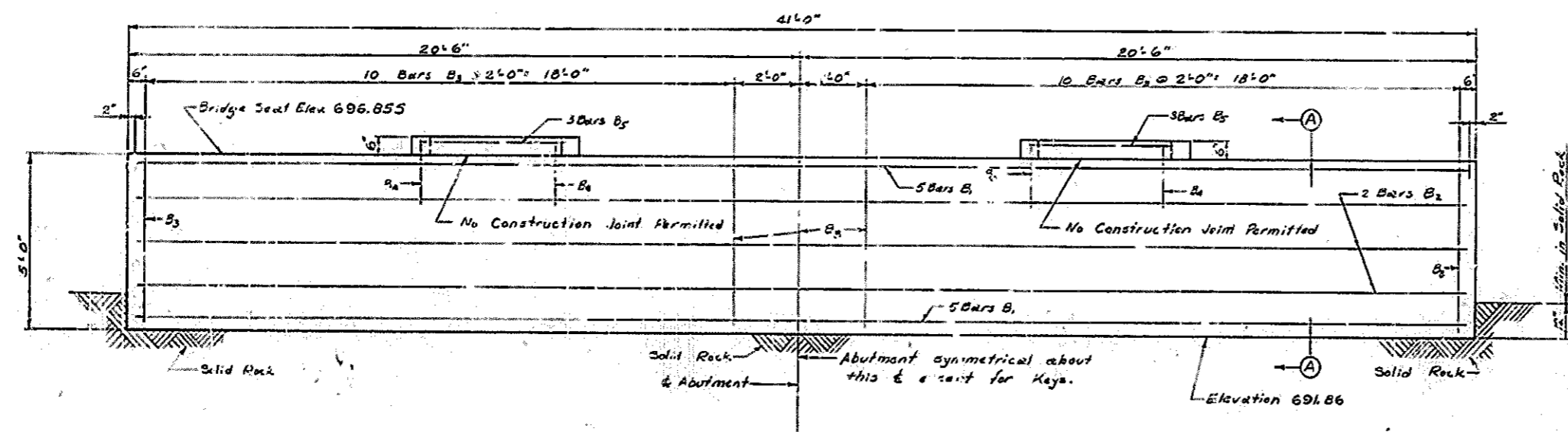
STATION 477-11.32
 BRIDGE NUMBER 56-273-1412
 PROJECT NO. I-64-2(29)16

NO. 15285

DESIGNED BY: [Name]
 CHECKED BY: [Name]
 DRAWN BY: [Name]
 DATE: [Date]



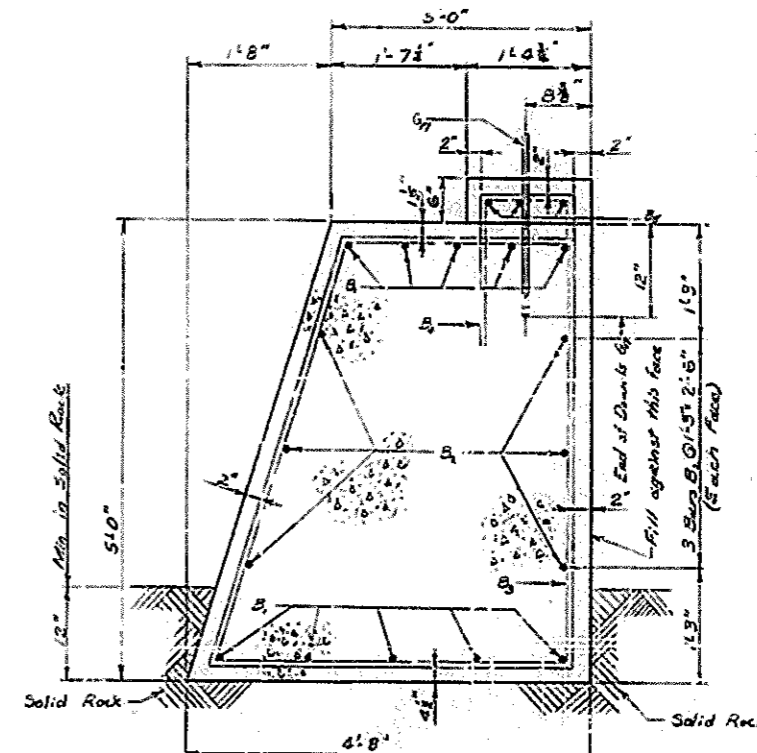
PLAN OF CAP



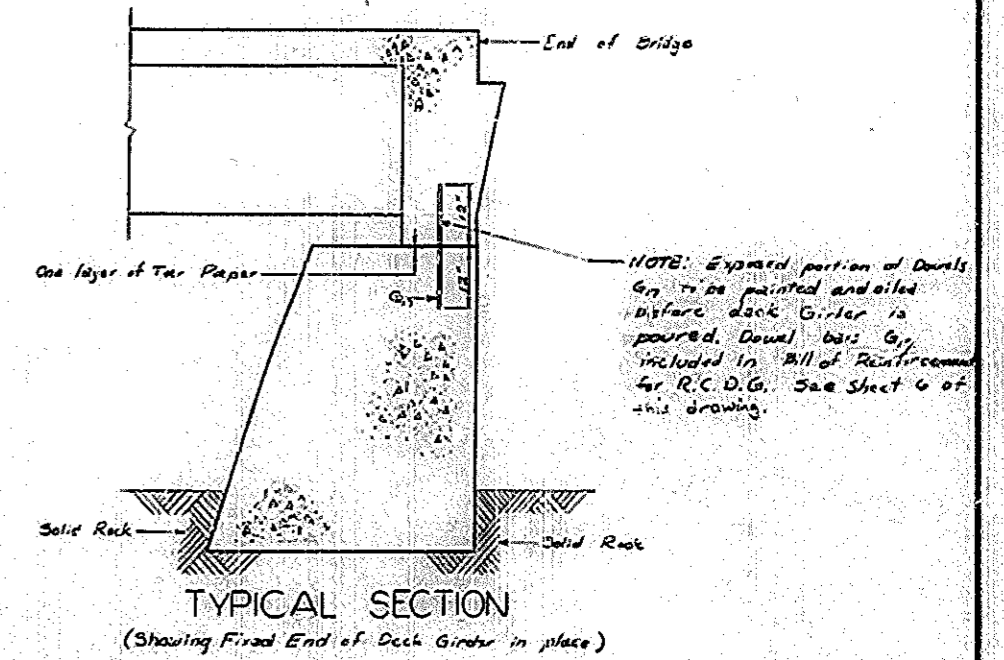
ELEVATION

ESTIMATE OF QUANTITIES

CONCRETE, CLASS 'A'	293 CU. YDS.
REINFORCEMENT	1213 LBS.

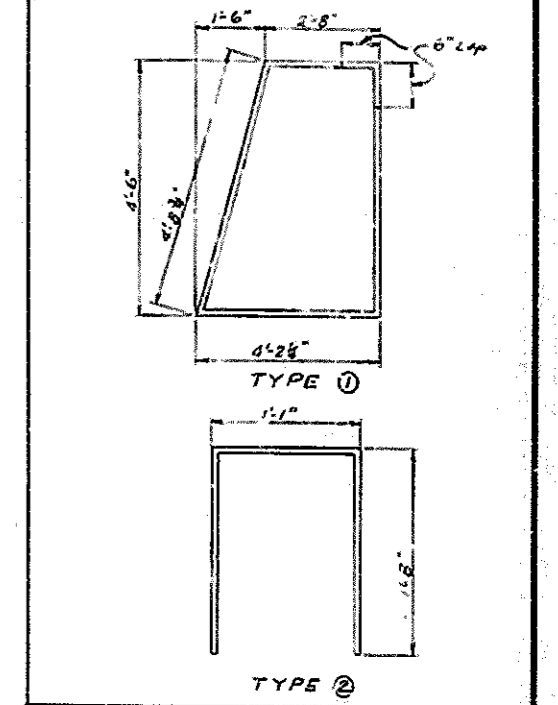


SECTION A-A



TYPICAL SECTION
(Showing Fixed End of Deck Girders in place)

BAR NO.	NO.	LENGTH	LOCATION
B1	10	47	Cap
B2	4	40	"
B3	2	11	"
B4	10	4	Key to Cap
B5	4	4	Key



DATE: _____
 REVISION: _____
 APPROVED BY: _____
 CHECKED BY: _____
 DRAWN BY: _____
 SCALE: _____
 SHEET NO.: _____

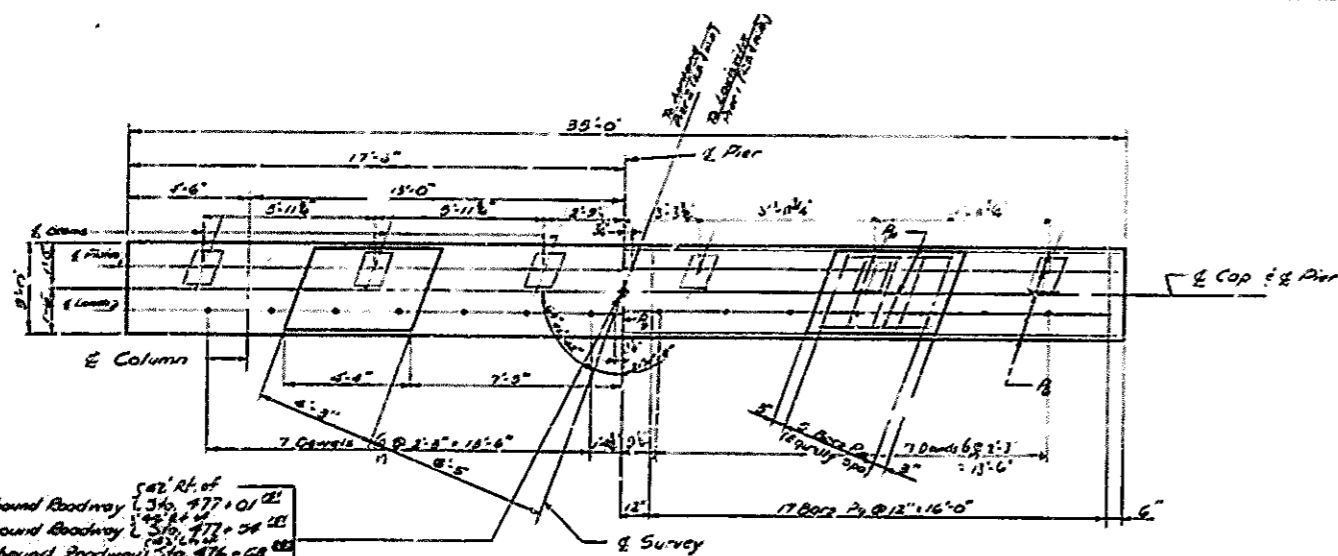
ABUTMENT I - EASTBOUND

T-6t OVER TUCKER STATION ROAD SHEET 3

COMMONWEALTH OF KENTUCKY
 DEPARTMENT OF HIGHWAYS
 FRANKFORT
 COUNTY OF
JEFFERSON
 LOUISVILLE-ASHLAND
 ROAD

STATION 477+11.23 PROJECT NO. 164-2(29)16

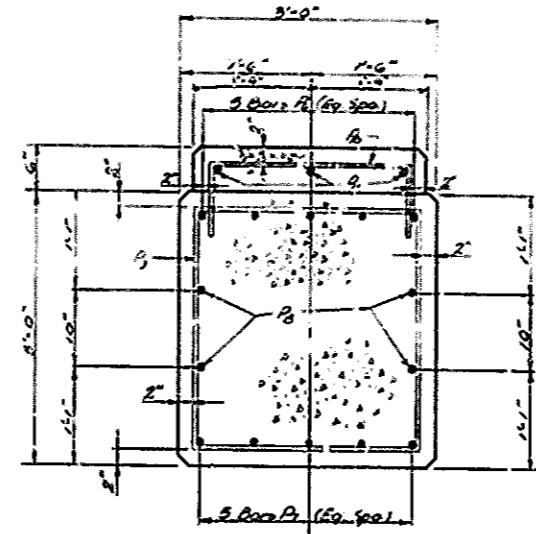
BRIDGE NUMBER 15285



PLAN OF CAP
(Piers 2 - Eastbound & Westbound)

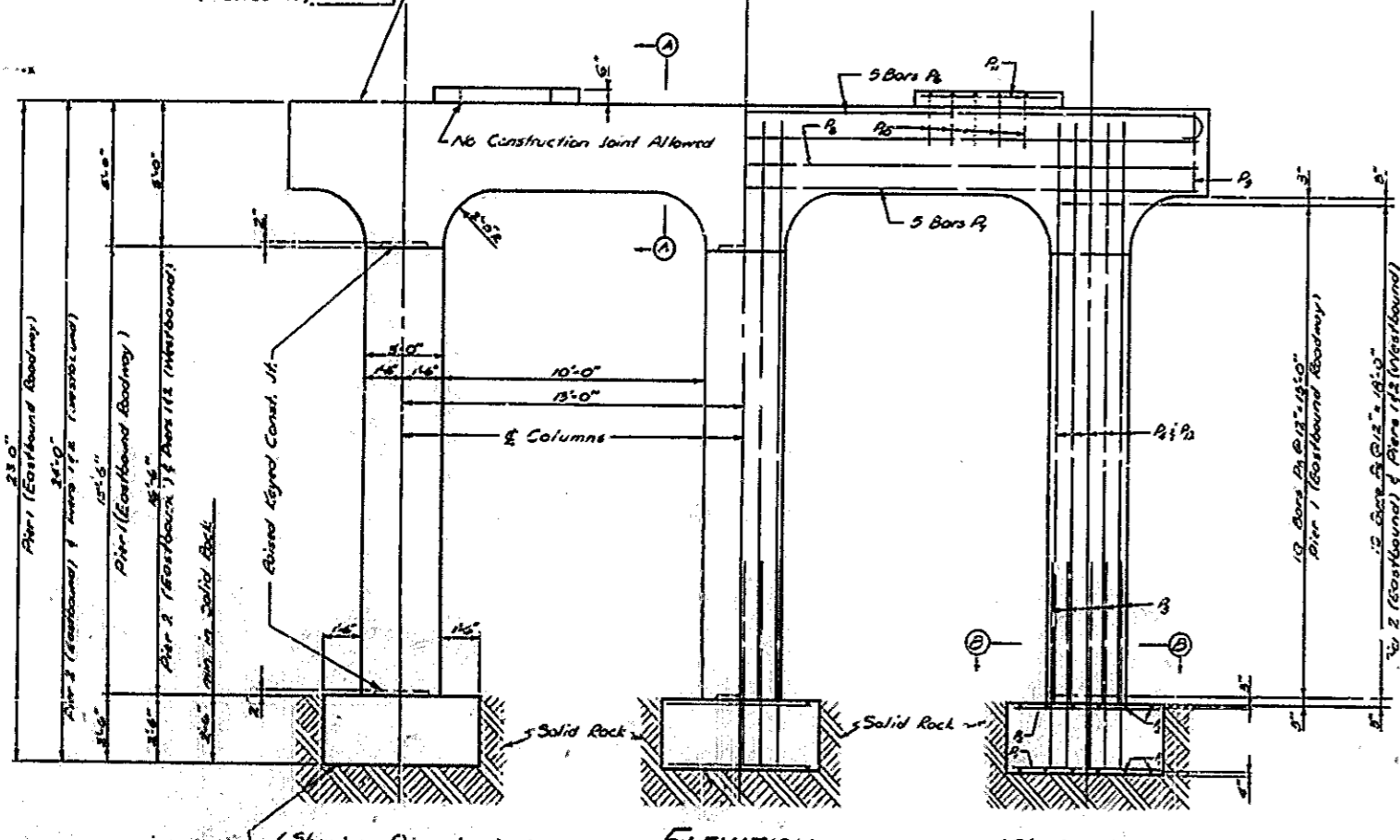
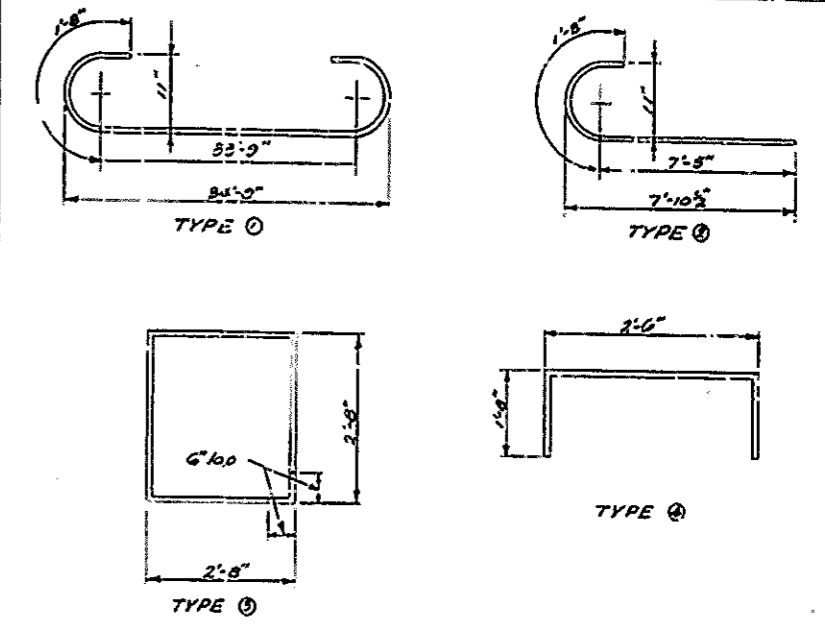
49' 0" of
 Pier 1 Eastbound Roadway [36, 777 + 0] 01
 Pier 2 Eastbound Roadway [36, 777 + 54] 01
 Pier 1 Westbound Roadway [36, 776 + 0] 01
 Pier 2 Westbound Roadway [36, 776 + 21] 01

Bridge Seat Elevations
 Pier 1 (Eastbound) 698.25
 Pier 2 (Eastbound) 698.45
 Pier 1 (Westbound) 698.25
 Pier 2 (Westbound) 698.25

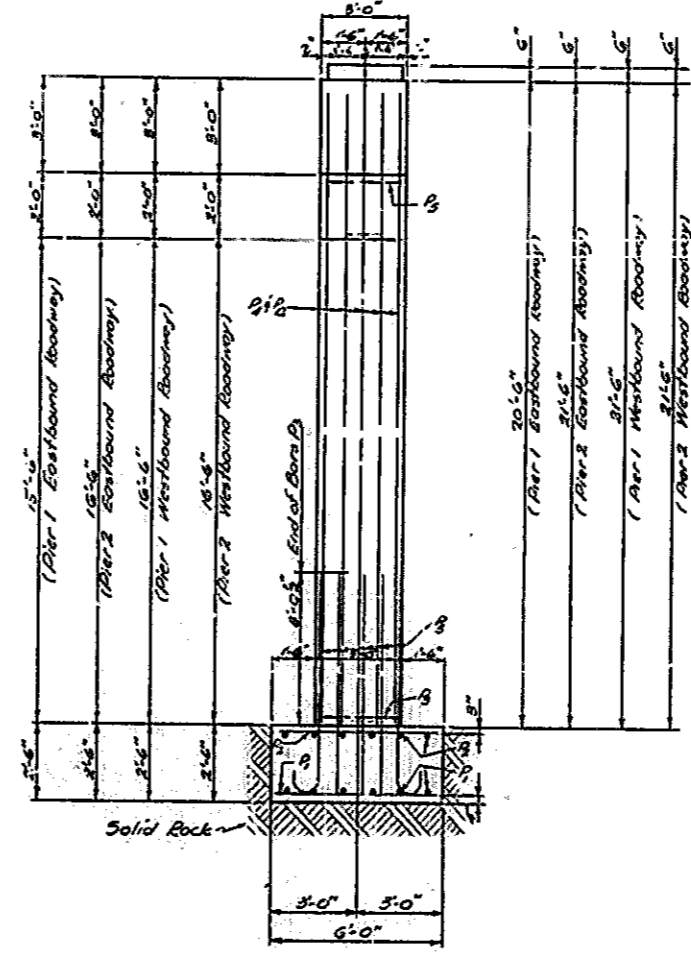


SECTION A-A

BILL OF REINFORCEMENT									
NO.	SIZE	LENGTH	LOCATION	7	8	9	10	11	12
		FT. IN.		FT.	IN.	FT.	IN.	FT.	IN.
1	#4	14	Bottom of Footing						
2	#4	10	Top of Footing						
3	#4	48	Columns						
4	#4	48	Columns						
5	#4	57	Cap						
6	#4	57	Cap						
7	#4	57	Cap						
8	#4	57	Cap						
9	#4	57	Cap						
10	#4	57	Cap						
11	#4	57	Cap						
12	#4	57	Cap						
13	#4	57	Cap						
14	#4	57	Cap						
15	#4	57	Cap						
16	#4	57	Cap						
17	#4	57	Cap						
18	#4	57	Cap						
19	#4	57	Cap						
20	#4	57	Cap						



ELEVATION

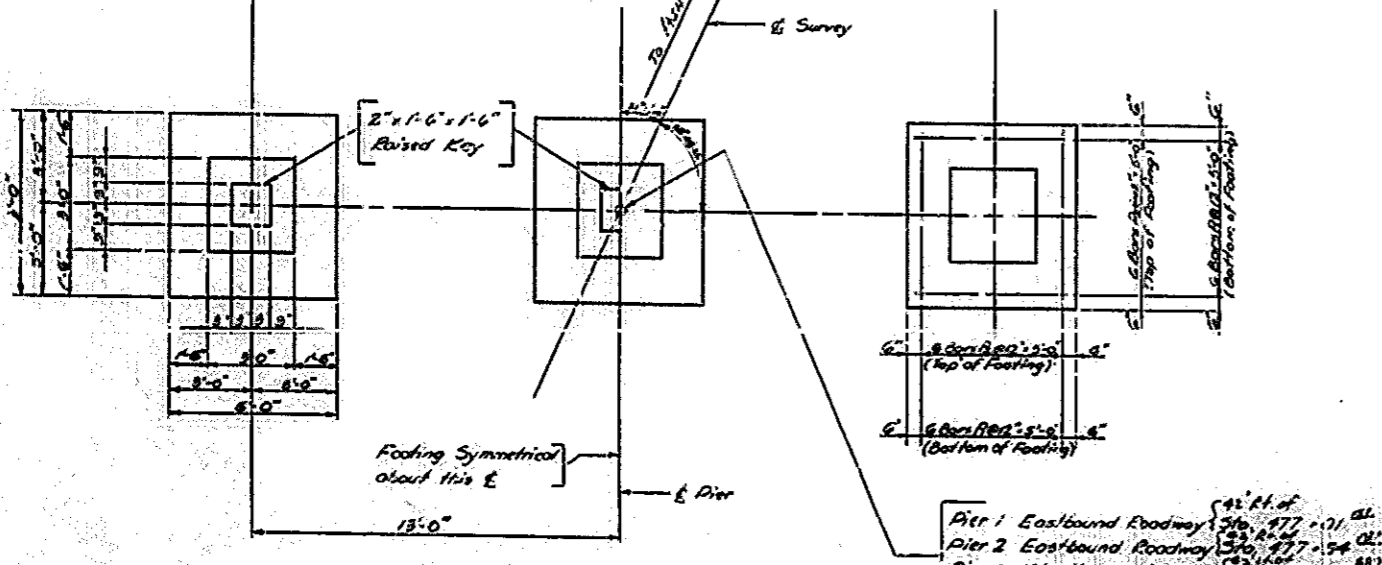


END ELEVATION

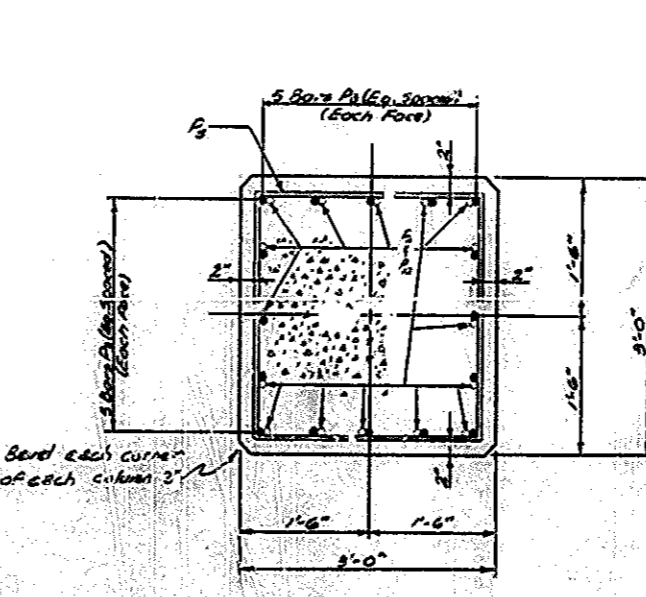
ESTIMATE OF QUANTITIES

EASTBOUND ROADWAY		
PIER 1		
CONCRETE, CLASS A	15.2	CU. YDS.
REINFORCEMENT	7607	LBS.
PIER 2		
CONCRETE, CLASS A	41.2	CU. YDS.
REINFORCEMENT	7793	LBS.
WESTBOUND ROADWAY		
PIER 1		
CONCRETE, CLASS A	41.2	CU. YDS.
REINFORCEMENT	7793	LBS.
PIER 2		
CONCRETE, CLASS A	41.2	CU. YDS.
REINFORCEMENT	7793	LBS.

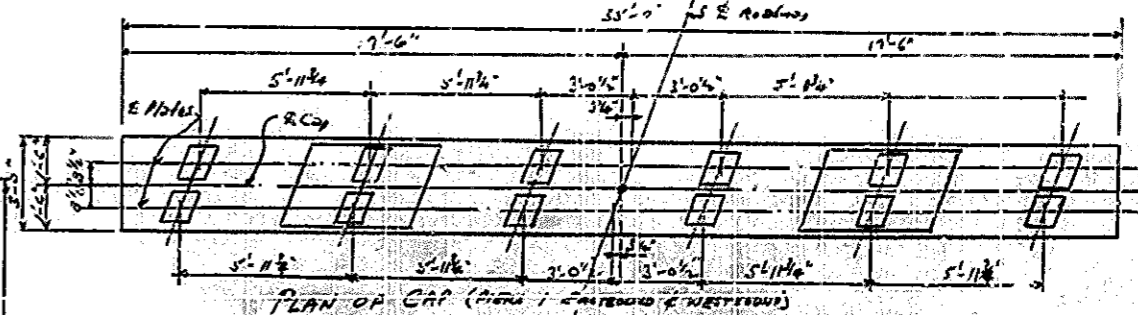
Elevations: Bottom of Footing
 Pier 1 (Eastbound) 698.25
 Pier 2 (Eastbound) 698.45
 Pier 1 (Westbound) 698.25
 Pier 2 (Westbound) 698.25



PLAN OF FOOTING



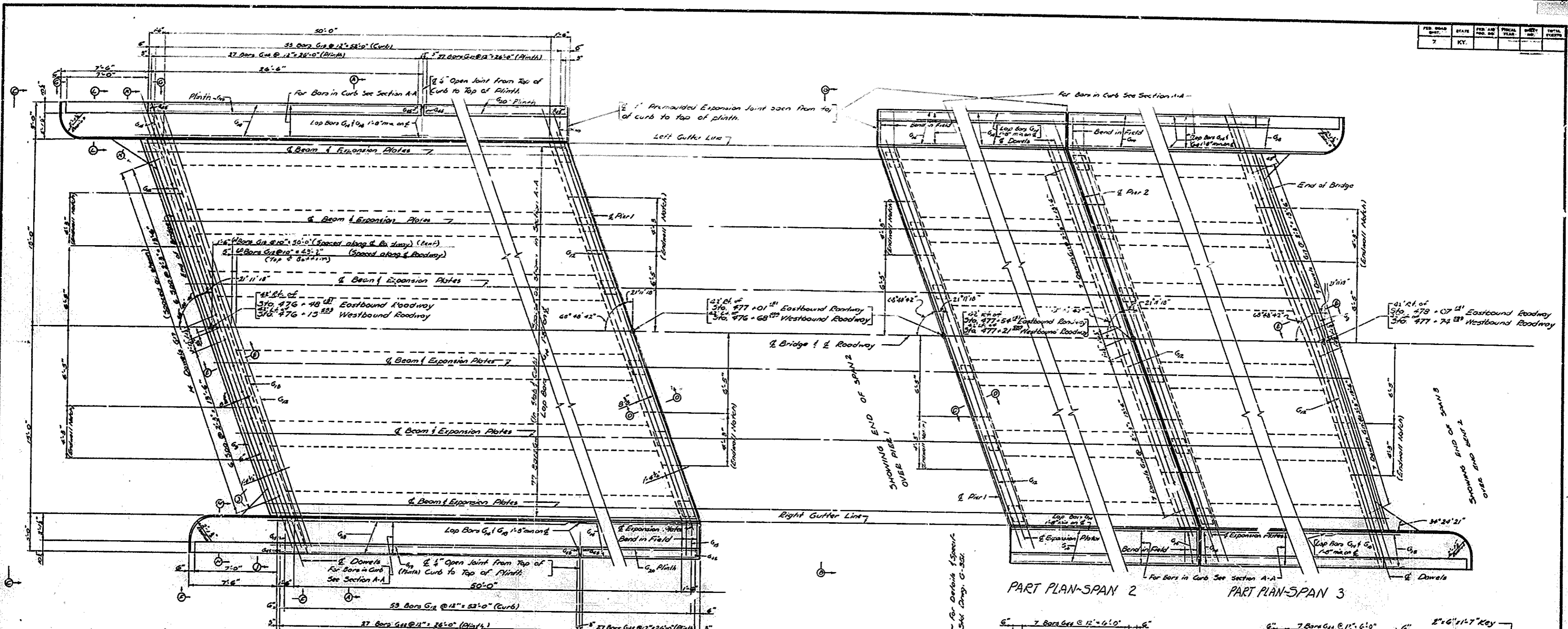
SECTION B-B
(Reinforcement same for all columns)



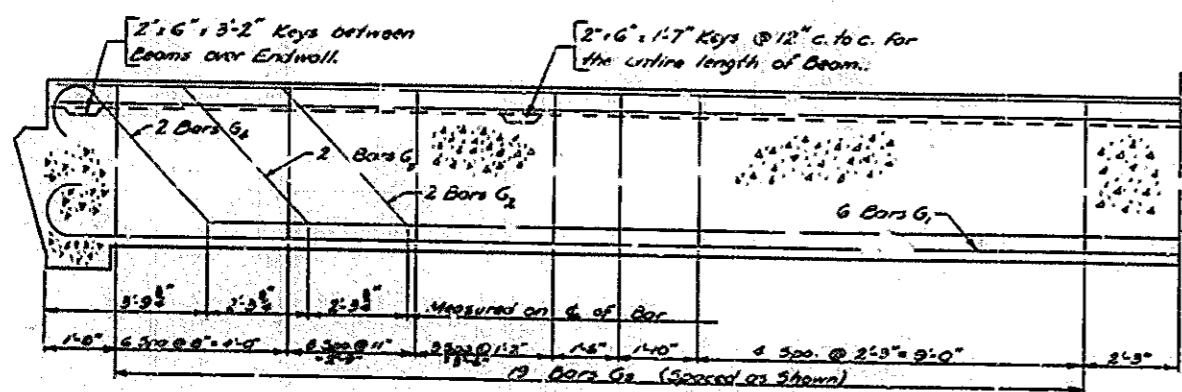
PLAN OF CAP (PIER 1 - EASTBOUND & WESTBOUND)
(For detail not shown see Plan of Cap - Pier 2)

COMMONWEALTH OF KENTUCKY
 DEPARTMENT OF HIGHWAYS
 FRANKFORT
 COUNTY OF
JEFFERSON
 LOUISVILLE - ASHLAND
 ROAD PROJECT NO. IGH-2(49)16
 STATION 477+11.11
 BRIDGE NUMBER 15285

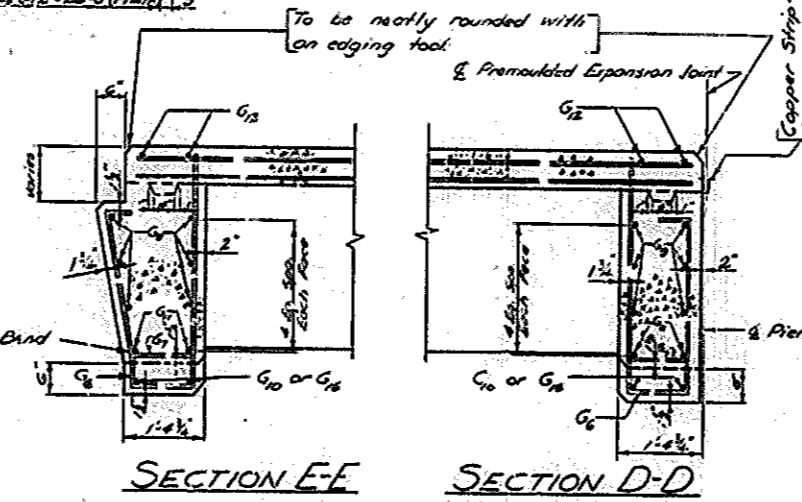
REVISIONS: DATE: 10/61
 BY: [Signature]
 CHECKED BY: [Signature]
 DATE: 11/61
 BY: [Signature]
 CHECKED BY: [Signature]
 DATE: 12/61
 BY: [Signature]
 CHECKED BY: [Signature]
 DATE: 1/62
 BY: [Signature]
 CHECKED BY: [Signature]
 DATE: 2/62
 BY: [Signature]
 CHECKED BY: [Signature]
 DATE: 3/62
 BY: [Signature]
 CHECKED BY: [Signature]
 DATE: 4/62
 BY: [Signature]
 CHECKED BY: [Signature]
 DATE: 5/62
 BY: [Signature]
 CHECKED BY: [Signature]
 DATE: 6/62
 BY: [Signature]
 CHECKED BY: [Signature]
 DATE: 7/62
 BY: [Signature]
 CHECKED BY: [Signature]
 DATE: 8/62
 BY: [Signature]
 CHECKED BY: [Signature]
 DATE: 9/62
 BY: [Signature]
 CHECKED BY: [Signature]
 DATE: 10/62
 BY: [Signature]
 CHECKED BY: [Signature]
 DATE: 11/62
 BY: [Signature]
 CHECKED BY: [Signature]
 DATE: 12/62
 BY: [Signature]
 CHECKED BY: [Signature]



PART PLAN SPAN 1
 (DETAILS AND REINFORCEMENT THE SAME FOR ALL SPANS EXCEPT FOR CURBS, PLINTHS, AND ENDMILLS.)



HALF SECTION ON C/L OF BEAM

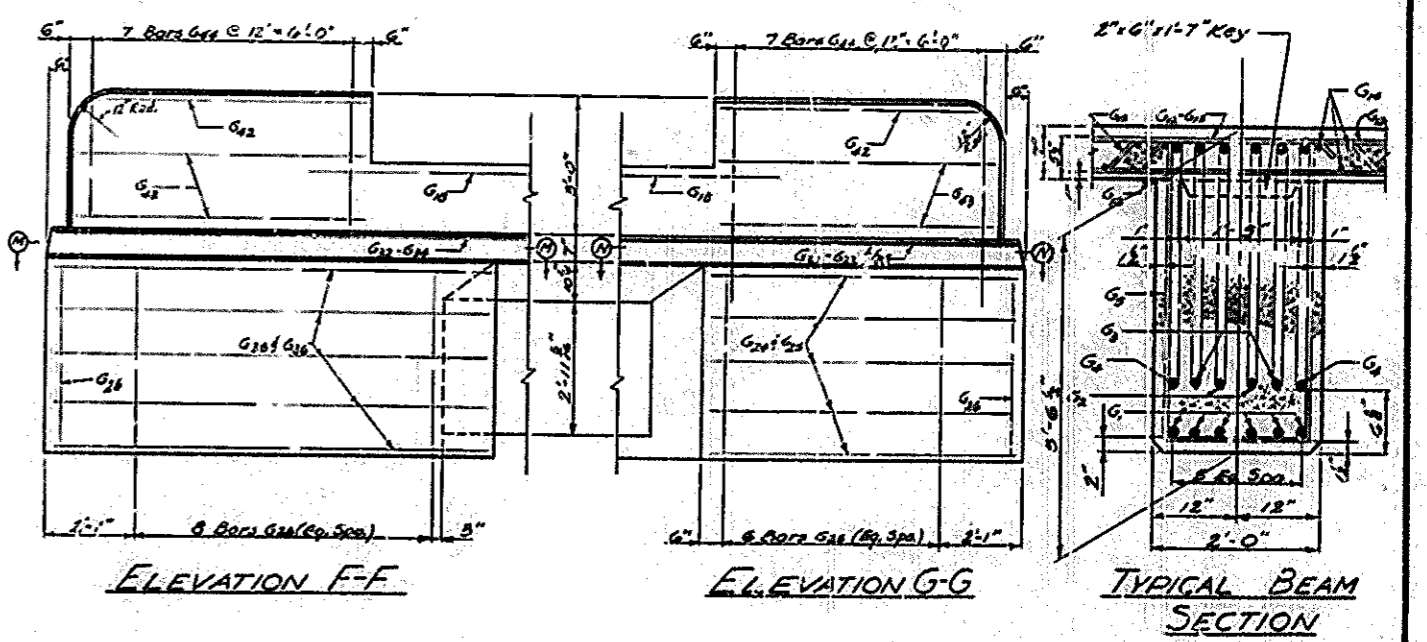


SECTION E-E

SECTION D-D

ESTIMATE OF QUANTITIES (FOR ONE BRIDGE)

SPAN 1		
CONCRETE, CLASS "A"	141.2	CU. YDS.
REINFORCEMENT	32789	LBS.
BRONZE PLATES	456	LBS.
SPAN 2		
CONCRETE, CLASS "A"	128.5	CU. YDS.
REINFORCEMENT	31326	LBS.
BRONZE PLATES	456	LBS.
SPAN 3		
CONCRETE, CLASS "A"	141.2	CU. YDS.
REINFORCEMENT	32789	LBS.
BRONZE PLATES	456	LBS.



ELEVATION F-F

ELEVATION G-G

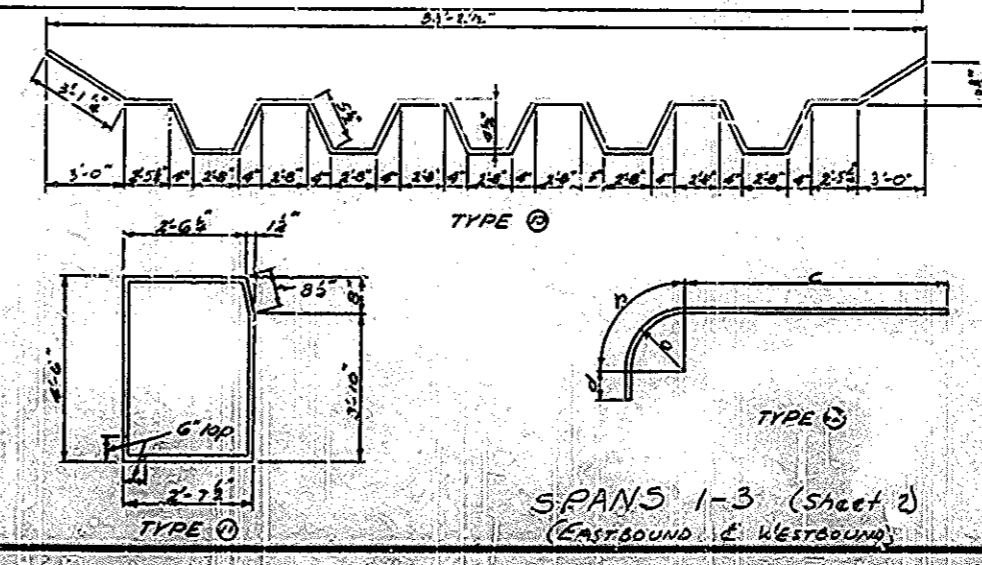
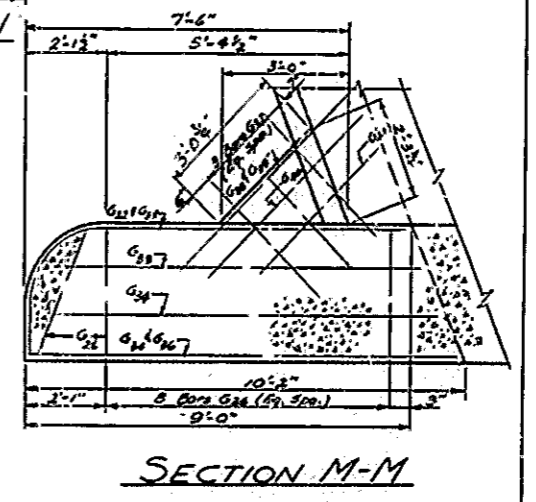
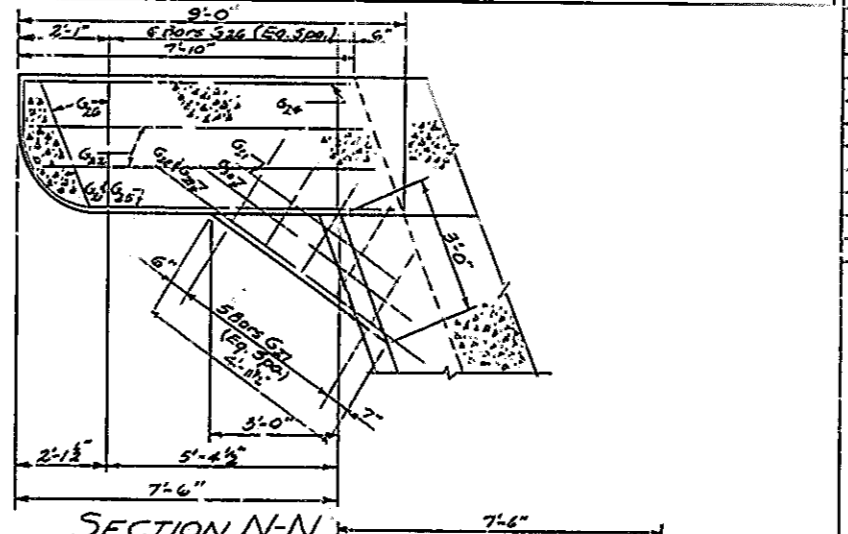
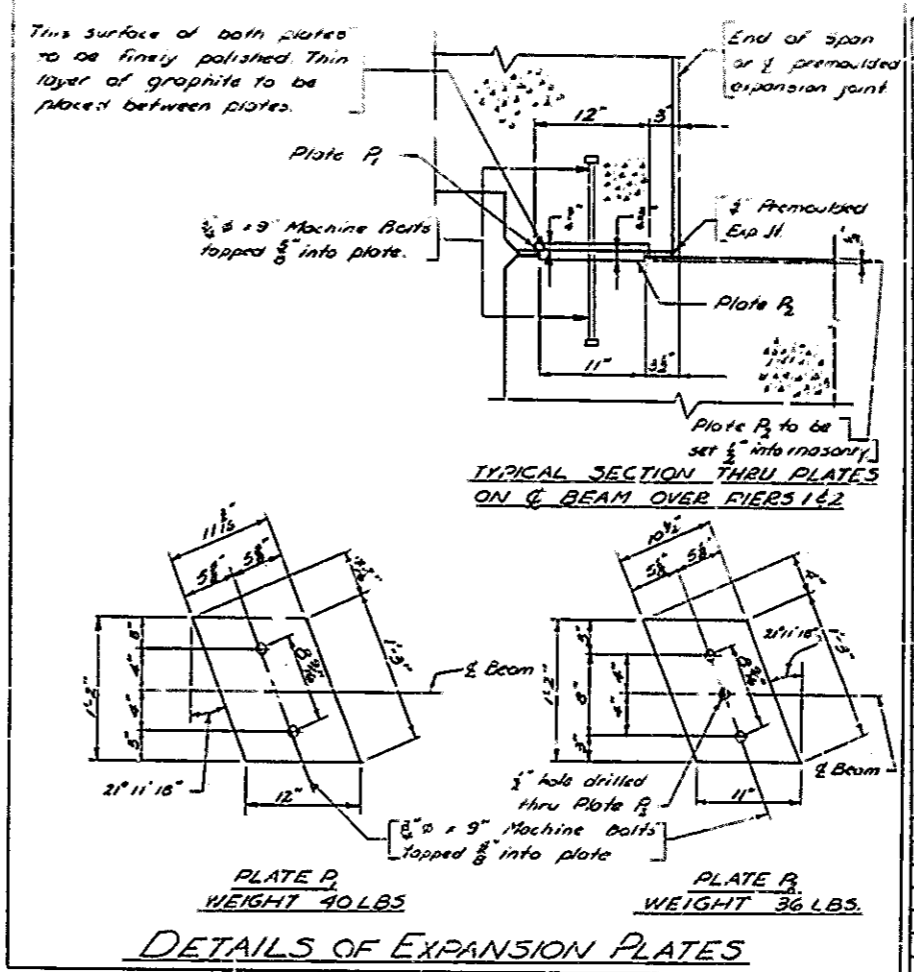
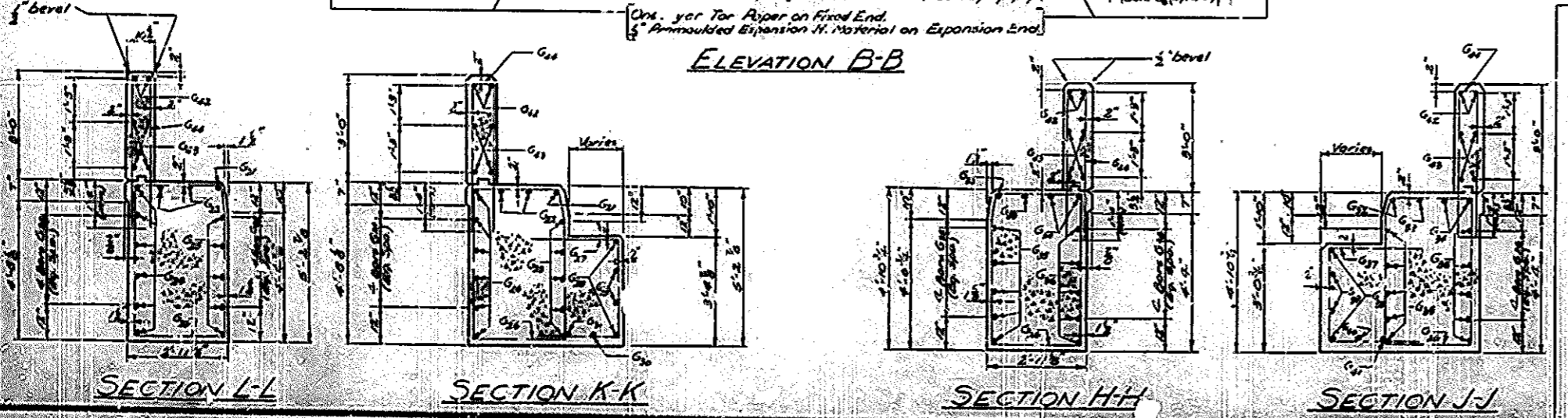
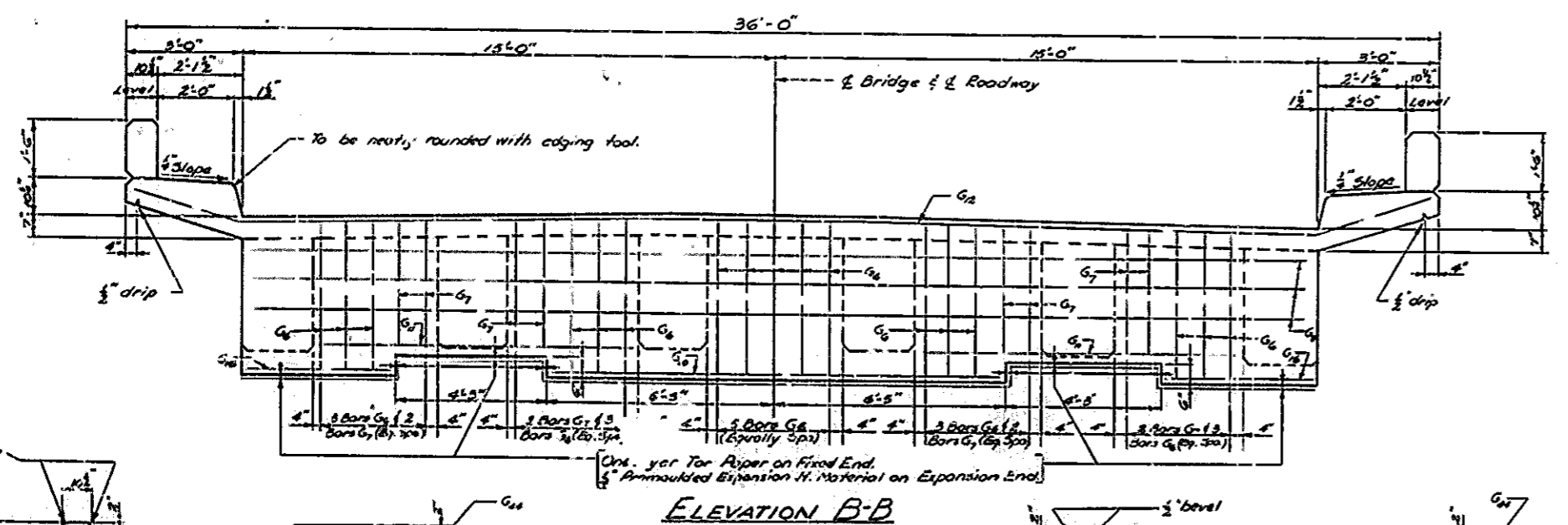
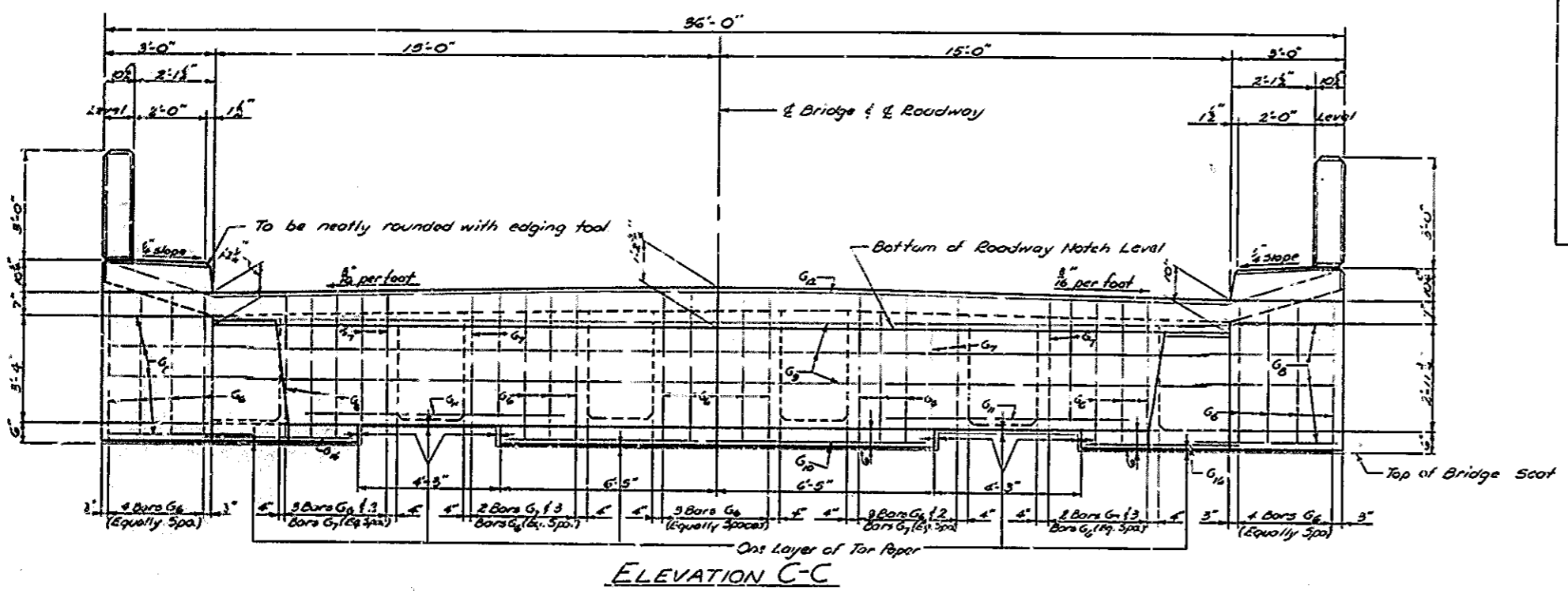
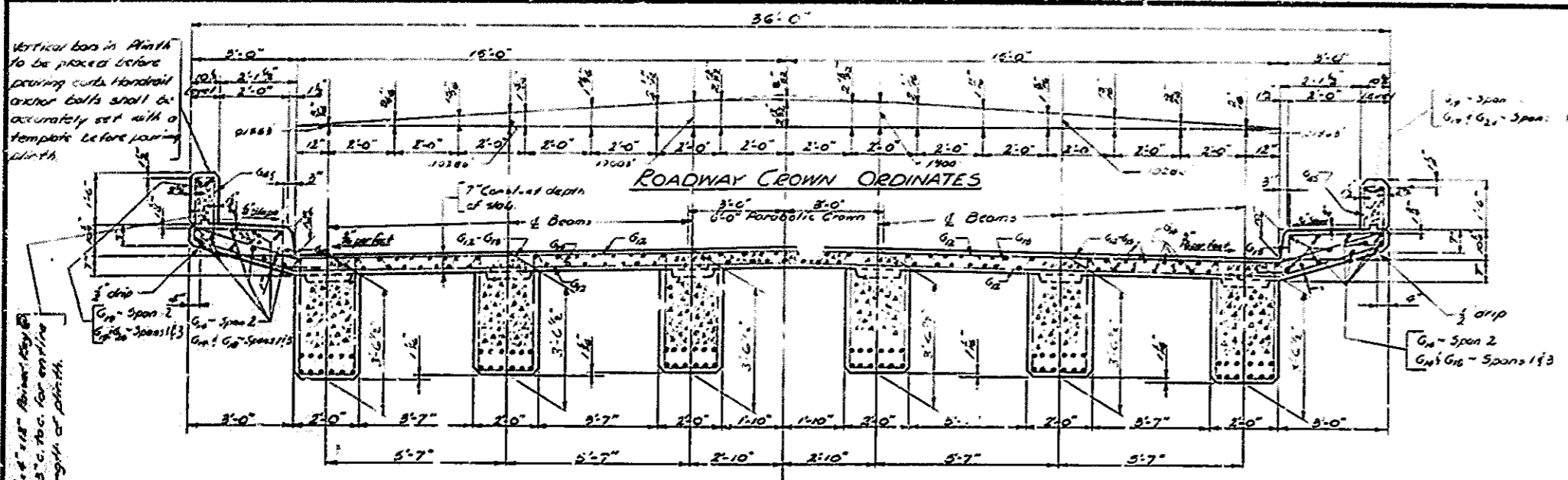
TYPICAL BEAM SECTION

SPANS 1-3 (SHEET 1 OF 2)
 (EASTBOUND & WESTBOUND)

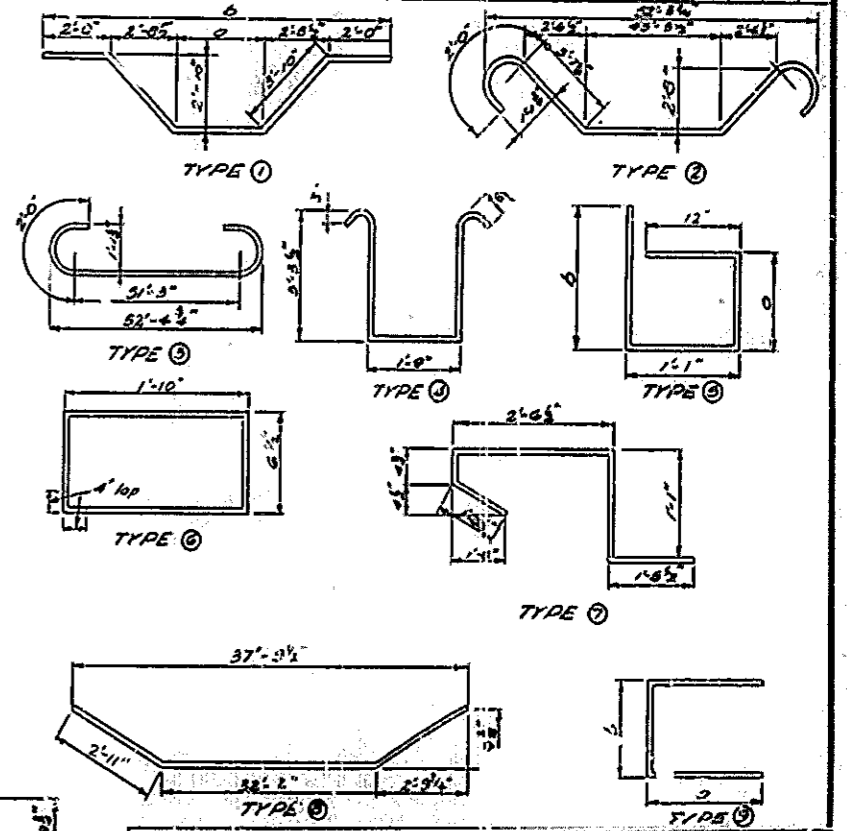
I-64 OVER TUCKER STATION ROAD SHEET 5

COMMONWEALTH OF KENTUCKY
 DEPARTMENT OF HIGHWAYS
 FRANKFORT
 COUNTY OF
JEFFERSON
 LOUISVILLE - ASHLAND

STATION 477 + 11.27
 BRIDGE NUMBER 15285
 PROJECT NO. 764-2(29)16



MARK	TIME	BILL OF REINFORCEMENT			
		NO.	SIZE	LENGTH	LOCATION
G1	36	36	36	36	Beams
G2	12	12	12	37	"
G3	12	12	12	37	"
G4	12	12	12	37	"
G5	24	24	24	4	Endwalls
G6	42	36	42	7	"
G7	16	16	16	7	"
G8	36	16	16	4	"
G9	12	12	12	37	"
G10	4	4	4	12	"
G11	8	8	8	9	"
G12	124	124	124	38	Slab
G13	67	67	67	39	"
G14	174	174	174	27	Slab & Curbs
G15	106	106	106	7	Curbs
G16	8	8	8	4	Endwalls
G17	14	14	14	2	Downs
G18	20	20	20	5	Curbs
G19	4	4	4	27	Downs
G20	4	4	4	26	"
G21	1	1	1	10	Top of Curbs
G22	2	2	2	7	"
G23	6	6	6	7	Wing Walls
G24	5	5	5	10	"
G25	16	16	16	11	"
G26	5	5	5	8	Haunches
G27	2	2	2	7	"
G28	2	2	2	6	"
G29	1	1	1	6	"
G30	1	1	1	5	Top of Curbs
G31	1	1	1	6	"
G32	2	2	2	6	"
G33	3	3	3	10	Wing Walls
G34	5	5	5	9	"
G35	3	3	3	11	Haunches
G36	2	2	2	8	"
G37	2	2	2	11	"
G38	1	1	1	8	"
G39	1	1	1	7	"
G40	4	4	4	2	Haunches
G41	8	8	8	8	"
G42	14	14	14	9	"
G43	108	108	108	5	Slabs



I-64 CYBER TUCKER STATION ROAD SHEET 6

COMMONWEALTH OF KENTUCKY

DEPARTMENT OF HIGHWAYS

FRANKFORT

COUNTY OF

JEFFERSON

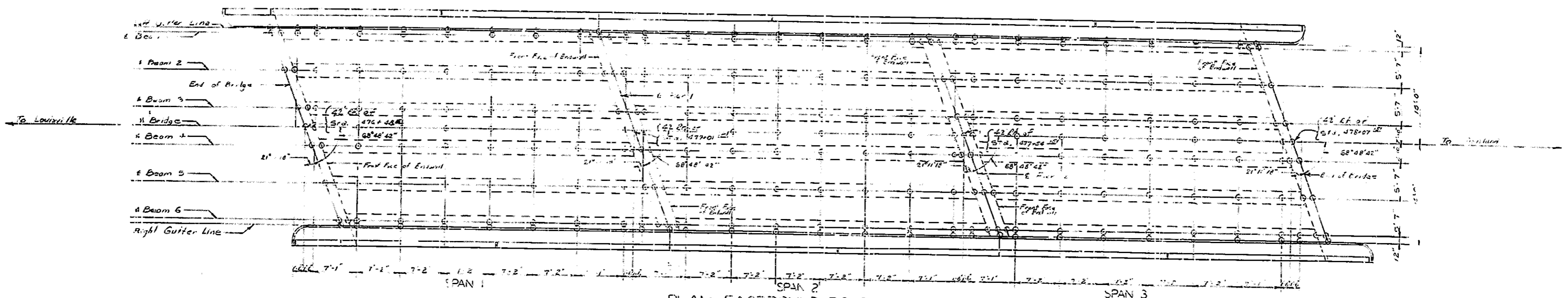
LOUISVILLE - ASHLAND

ROAD PROJECT NO. 768-2(19)16

STATION 277+11.27

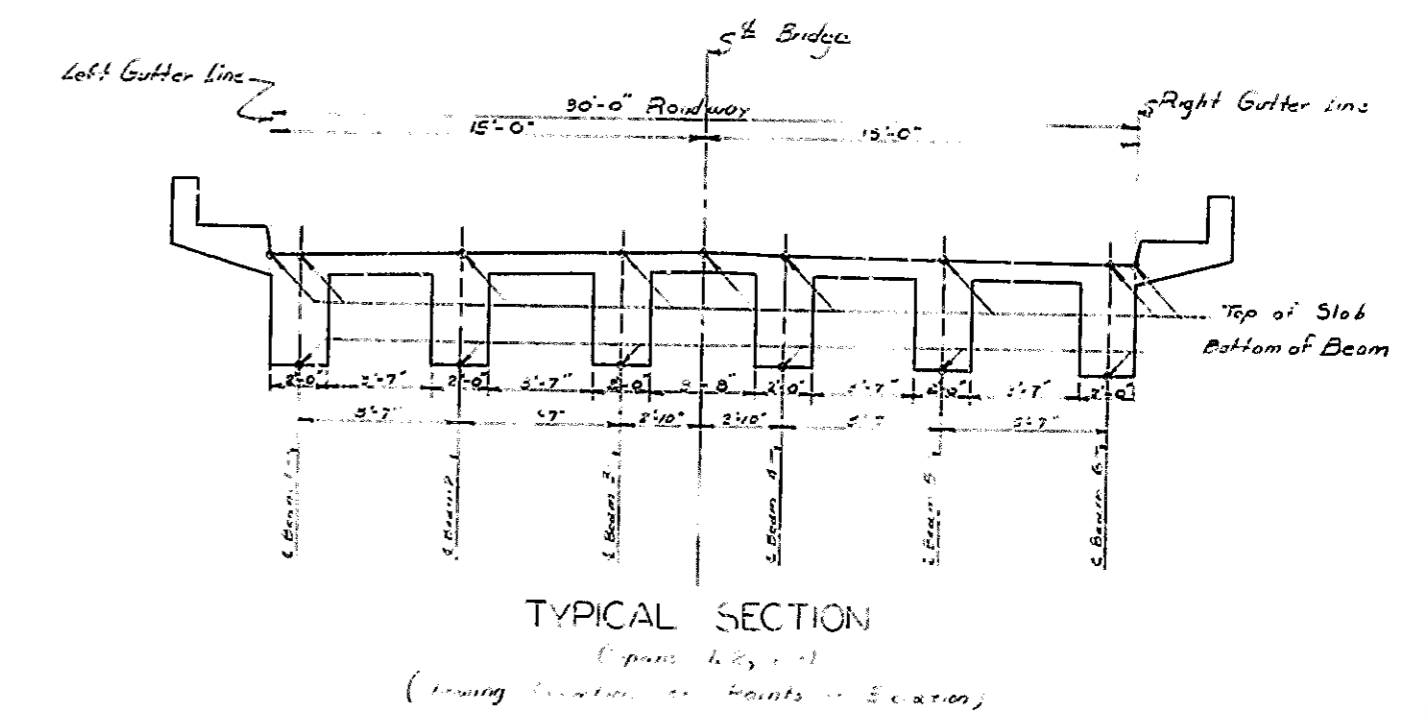
BRIDGE NUMBER

15285



PLAN - EASTBOUND ROADWAY
3-30 ROADWAY SPANS - 21118 SKEW LEFT - 30° ROADWAY

LOCATION	LEFT GUTTER LINE	ELEVATIONS						RIGHT GUTTER LINE
		E BEAM 1 TOP OF SLAB BOTTOM OF BEAM	E BEAM 2 TOP OF SLAB BOTTOM OF BEAM	E BEAM 3 TOP OF SLAB BOTTOM OF BEAM	E BEAM 4 TOP OF SLAB BOTTOM OF BEAM	E BEAM 5 TOP OF SLAB BOTTOM OF BEAM	E BEAM 6 TOP OF SLAB BOTTOM OF BEAM	
SPAN 1								
END OF BRIDGE	701.263	701.267	701.283	701.312	701.300	701.296	701.090	700.201
FRONT FACE OF ENDWALL	701.133	701.134	697.680	697.703	697.725	697.659	697.507	697.555
1	701.059	701.069	697.558	701.153	697.611	701.236	697.624	701.255
2	700.831	700.863	697.325	700.951	697.409	701.035	697.494	701.056
3	700.691	700.657	697.115	700.743	697.801	700.828	697.287	702.818
4	700.457	700.443	696.901	700.530	696.988	700.677	697.075	700.638
5	700.209	700.224	696.683	700.315	696.771	700.401	696.860	700.423
6	699.986	700.002	696.450	700.092	696.590	700.181	696.670	700.203
7	699.759	699.775	696.233	699.816	696.325	699.957	696.415	699.980
8								
9								
10								
FRONT FACE OF ENDWALL			696.180	696.205	696.225	699.755	699.736	696.154
6 PIER 1	699.673	699.677	699.699	699.722	699.710	699.696	699.504	699.561
SPAN 2								
FRONT FACE OF ENDWALL	699.549	699.564	696.090	696.113	696.135	696.069	695.917	695.765
11	699.464	699.479	695.938	695.963	695.985	695.919	695.767	695.615
12	699.261	699.276	695.735	695.761	695.783	695.717	695.565	695.413
13	699.057	699.072	695.532	695.558	695.580	695.514	695.362	695.210
14	698.853	698.868	695.329	695.355	695.377	695.311	695.159	695.007
15	698.648	698.663	695.126	695.152	695.174	695.108	694.956	694.804
16	698.444	698.459	694.923	694.949	694.971	694.905	694.753	694.601
17	698.239	698.254	694.720	694.746	694.768	694.702	694.550	694.398
18	698.035	698.050	694.517	694.543	694.565	694.499	694.347	694.195
FRONT FACE OF ENDWALL	697.830	697.845	694.314	694.340	694.362	694.296	694.144	693.992
6 PIER 2	697.625	697.640	694.111	694.137	694.159	694.093	693.941	693.789
SPAN 3								
FRONT FACE OF ENDWALL	697.420	697.435	693.908	693.934	693.956	693.890	693.738	693.586
19	697.215	697.230	693.705	693.731	693.753	693.687	693.535	693.383
20	697.010	697.025	693.502	693.528	693.550	693.484	693.332	693.180
21	696.805	696.820	693.299	693.325	693.347	693.281	693.129	692.977
22	696.600	696.615	693.096	693.122	693.144	693.078	692.926	692.774
23	696.395	696.410	692.893	692.919	692.941	692.875	692.723	692.571
24	696.190	696.205	692.690	692.716	692.738	692.672	692.520	692.368
25	695.985	695.999	692.487	692.513	692.535	692.469	692.317	692.165
26	695.780	695.795	692.284	692.310	692.332	692.266	692.114	691.962
FRONT FACE OF ENDWALL	695.575	695.590	692.081	692.107	692.129	692.063	691.911	691.759
FRONT FACE OF ENDWALL	695.370	695.385	691.878	691.904	691.926	691.860	691.708	691.556



TYPICAL SECTION
(From Section 1, 2, 3, 4, 5, 6, 7, 8, 9, 10, 11, 12, 13, 14, 15, 16, 17, 18, 19, 20, 21, 22, 23, 24, 25, 26)

NOTE: All elevations shown on this sheet include construction allowance and are to be maintained with as-built in place.

ELEVATIONS
(Eastbound Bridge)

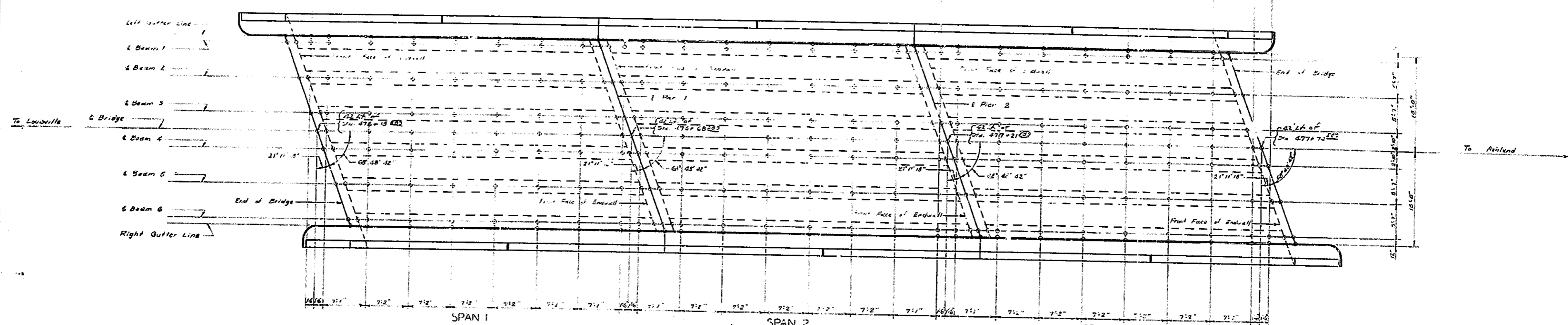
I-64 OVER TUCKER
STATION ROAD

SHEET 7

COMMONWEALTH OF KENTUCKY
DEPARTMENT OF HIGHWAYS
FRANKFORT
COUNTY OF
JEFFERSON
LOUISVILLE - ASHLAND

STATION 477.111-21
PROJECT NO. 164-2(29)16

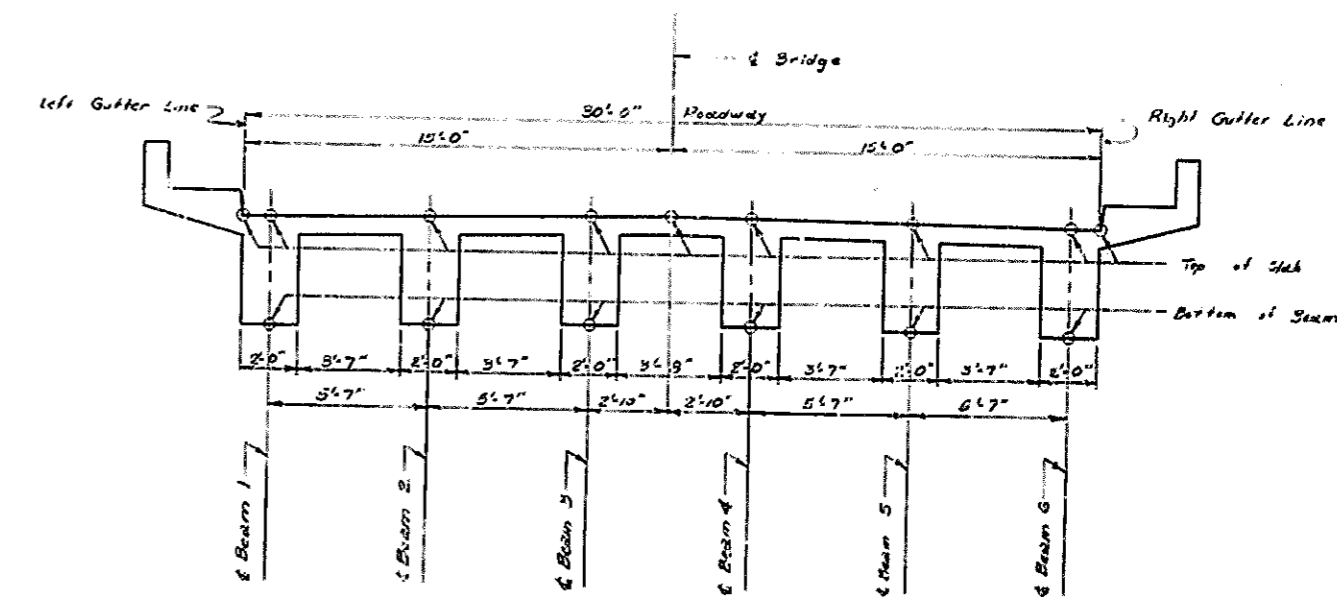
BRIDGE NUMBER **15285**



PLAN - WESTBOUND ROADWAY
3-30' ROADG. SPANS - 27' 18" SKEW LEFT - 30' ROADWAY

ELEVATIONS

LOCATION	LEFT GUTTER LINE	BEAM 1		BEAM 2		BEAM 3		BRIDGE	BEAM 4		BEAM 5		BEAM 6		RIGHT GUTTER LINE
		TOP OF SLAB	BOTTOM OF BEAM	TOP OF SLAB	BOTTOM OF BEAM	TOP OF SLAB	BOTTOM OF BEAM		TOP OF SLAB	BOTTOM OF BEAM	TOP OF SLAB	BOTTOM OF BEAM	TOP OF SLAB	BOTTOM OF BEAM	
SPAN 1															
END OF BRIDGE FRONT FACE OF ENDWALL	702.240	702.244	698.637	702.266	698.680	702.288	698.702	702.276	702.223	702.070	701.918	701.818	701.818	701.818	701.818
1	702.116	702.181	698.589	702.150	698.588	702.219	698.671	702.231	702.032	701.809	698.467	701.918	698.376	701.827	698.285
2	701.828	701.843	698.301	701.928	698.386	702.012	698.471	702.032	701.809	698.262	701.712	698.172	701.424	698.082	701.408
3	701.419	701.433	698.013	701.720	698.175	701.865	698.263	701.825	701.614	698.051	701.508	697.963	701.416	697.875	701.400
4	701.004	701.019	697.716	701.507	697.765	701.594	697.831	701.559	701.379	697.617	701.272	697.250	701.204	697.163	701.185
5	700.589	700.603	697.428	701.000	697.467	701.158	697.517	701.120	701.100	697.255	701.045	697.023	700.988	697.047	700.979
6	700.174	700.188	697.143	700.540	697.182	700.690	697.231	700.652	700.632	697.006	700.553	697.004	700.543	697.004	700.531
7	700.174	700.188	697.143	700.540	697.182	700.690	697.231	700.652	700.632	697.006	700.553	697.004	700.543	697.004	700.531
8	700.174	700.188	697.143	700.540	697.182	700.690	697.231	700.652	700.632	697.006	700.553	697.004	700.543	697.004	700.531
9	700.174	700.188	697.143	700.540	697.182	700.690	697.231	700.652	700.632	697.006	700.553	697.004	700.543	697.004	700.531
10	700.174	700.188	697.143	700.540	697.182	700.690	697.231	700.652	700.632	697.006	700.553	697.004	700.543	697.004	700.531
FRONT FACE OF ENDWALL PIER 1	700.450	700.454	697.157	700.476	697.180	700.509	697.202	700.486	700.433	697.136	696.984	696.984	696.984	696.984	700.436
SPAN 2															
FRONT FACE OF ENDWALL PIER 1	700.450	700.454	697.157	700.476	697.180	700.509	697.202	700.486	700.433	697.136	696.984	696.984	696.984	696.984	700.436
9	700.226	700.241	696.939	700.210	696.930	700.232	697.011	700.241	700.042	696.789	696.789	696.789	696.789	696.789	700.221
10	700.441	700.456	696.912	700.540	696.998	700.623	697.081	700.641	700.442	700.419	696.877	700.323	696.786	700.237	696.697
11	700.238	700.253	696.711	700.338	696.776	700.422	696.881	700.442	700.243	700.213	696.672	700.124	696.582	700.034	696.492
12	700.028	700.043	696.502	700.130	696.558	700.215	696.678	700.247	700.048	700.018	696.461	699.915	696.373	699.826	696.285
13	699.804	699.819	696.288	699.917	696.345	700.004	696.464	700.024	700.003	696.461	699.915	696.373	699.826	696.285	699.810
14	699.393	699.408	696.070	699.700	696.128	699.788	696.246	699.702	696.247	699.702	696.160	699.614	696.073	699.599	699.599
15	698.973	698.988	695.847	699.479	695.917	699.568	696.027	699.580	699.510	696.028	699.485	695.943	699.398	695.857	699.383
16	698.553	698.568	695.620	699.253	695.711	699.344	695.802	699.357	699.347	695.806	699.263	699.176	695.136	699.103	699.091
17	698.133	698.148	695.403	699.027	695.461	699.126	695.181	699.040	699.030	695.181	699.040	695.136	699.040	695.136	699.041
18	697.713	697.728	695.183	698.801	695.239	699.006	694.936	698.920	698.910	694.936	698.844	694.801	698.716	694.671	698.641
FRONT FACE OF ENDWALL PIER 2	699.060	699.064	695.757	699.086	695.780	699.108	695.812	699.096	699.043	695.546	695.394	695.394	695.394	695.394	699.044
SPAN 3															
FRONT FACE OF ENDWALL PIER 2	699.060	699.064	695.757	699.086	695.780	699.108	695.812	699.096	699.043	695.546	695.394	695.394	695.394	695.394	699.044
17	698.640	698.655	695.537	698.720	695.591	698.806	695.650	698.720	698.710	695.537	695.394	695.394	695.394	695.394	698.711
18	698.220	698.235	695.317	698.490	695.371	698.576	695.430	698.490	698.480	695.317	695.174	695.174	695.174	695.174	698.481
19	697.800	697.815	695.097	698.260	695.151	698.346	695.210	698.260	698.250	695.097	694.954	694.954	694.954	694.954	698.251
20	697.380	697.395	694.877	698.030	694.937	698.116	694.996	698.030	698.020	694.877	694.734	694.734	694.734	694.734	698.021
21	696.960	696.975	694.657	697.800	694.717	697.886	694.776	697.800	697.790	694.657	694.514	694.514	694.514	694.514	697.791
22	696.540	696.555	694.437	697.570	694.497	697.656	694.556	697.570	697.560	694.437	694.294	694.294	694.294	694.294	697.581
23	696.120	696.135	694.217	697.340	694.267	697.426	694.326	697.340	697.330	694.217	694.074	694.074	694.074	694.074	697.371
24	695.700	695.715	693.997	697.110	694.047	697.192	694.106	697.110	697.100	693.997	693.854	693.854	693.854	693.854	697.101
25	695.280	695.295	693.777	696.880	693.827	697.062	693.886	696.880	696.870	693.777	693.634	693.634	693.634	693.634	697.091
26	694.860	694.875	693.557	696.650	693.597	696.832	693.656	696.650	696.640	693.557	693.414	693.414	693.414	693.414	697.081
FRONT FACE OF ENDWALL PIER 3	697.370	697.374	694.347	697.396	694.370	697.418	694.402	697.396	697.343	694.136	693.984	693.984	693.984	693.984	697.344
END OF BRIDGE	697.370	697.374	694.347	697.396	694.370	697.418	694.402	697.396	697.343	694.136	693.984	693.984	693.984	693.984	697.344



TYPICAL SECTION
(Spans 1, 2, 3)
(Showing Location of Points of Elevation)

NOTE: All elevations shown on this sheet include construction center and are to be maintained with falsework in place.

ELEVATIONS
(WESTBOUND BRIDGE)

I-64 OVER TUCKER STATION ROAD SHEET 8

COMMONWEALTH OF KENTUCKY
DEPARTMENT OF HIGHWAYS
FRANKFORT
COUNTY OF JEFFERSON

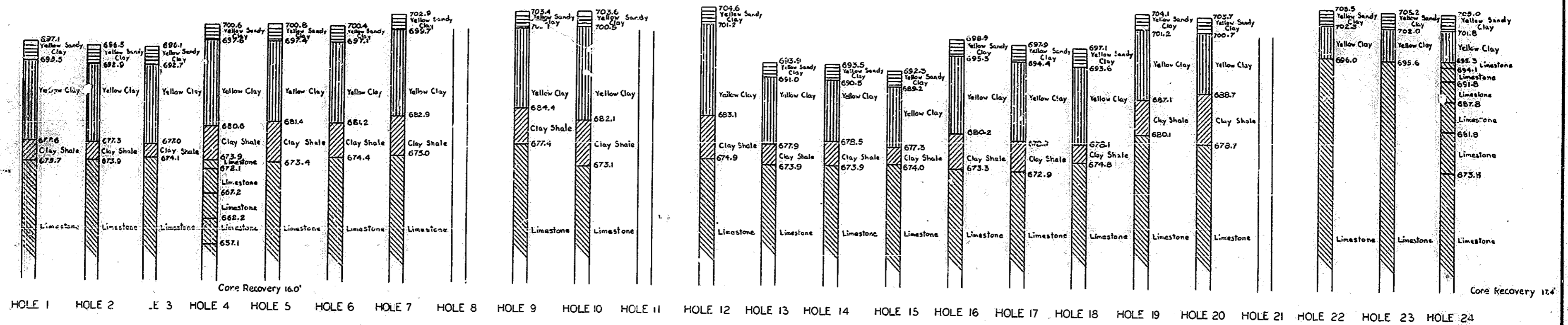
LOUISVILLE - ASHLAND ROAD

STATION 477+11.2 PROJECT NO. 164-2(27)16

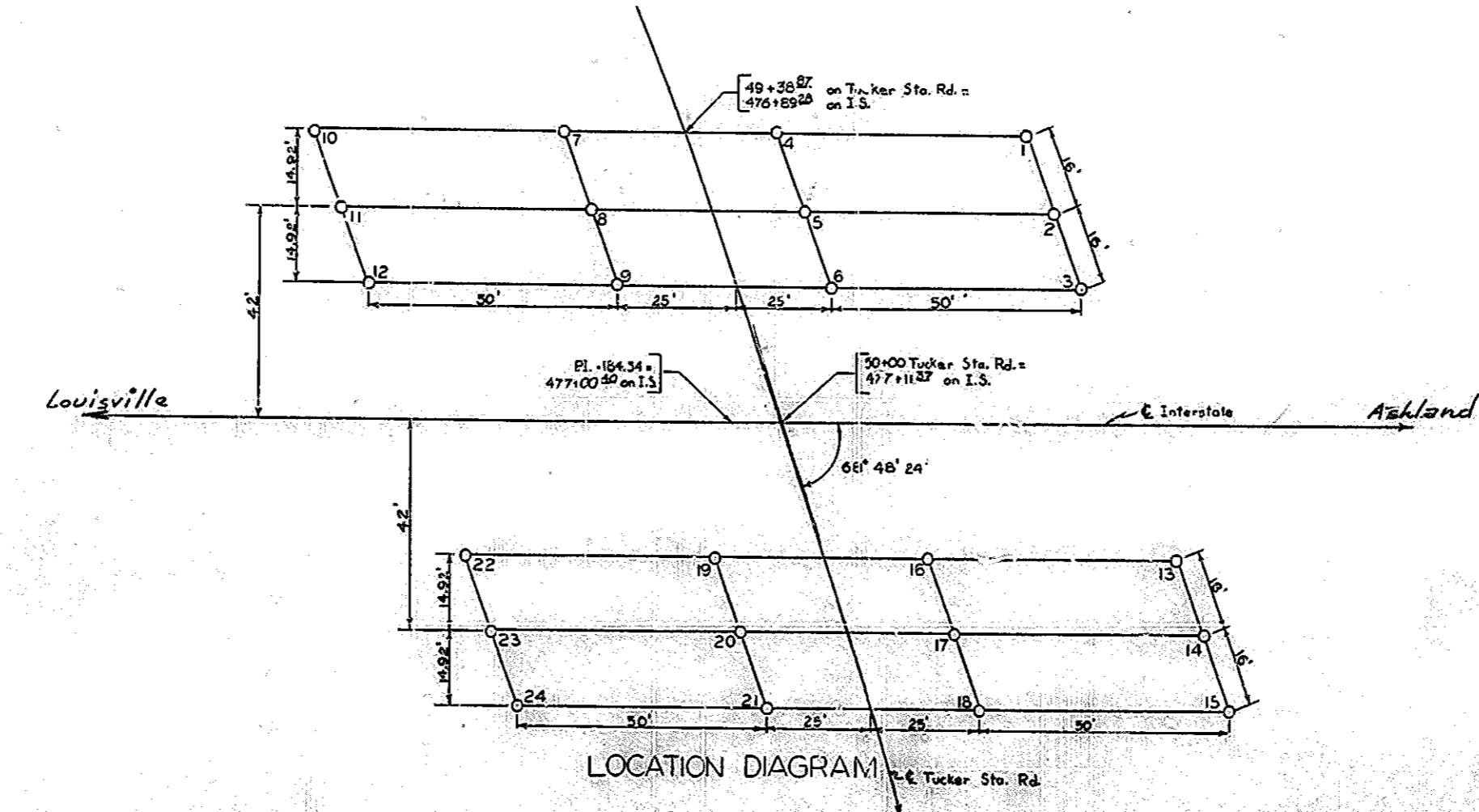
BRIDGE NUMBER 15285

7	KY.				
---	-----	--	--	--	--

NOTE: Limestone is hatched with clay shale.



Scale 1"=10'



SOUNDINGS

I-64 OVER TUCKER STATION ROAD SHEET 9

COMMONWEALTH OF KENTUCKY
DEPARTMENT OF HIGHWAYS
FRANKFORT
COUNTY OF
JEFFERSON
LOUISVILLE TO ASHLAND
ROAD PROJECT NO. 16A-2(89)16
STATION 477+11.27
BRIDGE NUMBER 15285